

Length measurement with Digital counter!

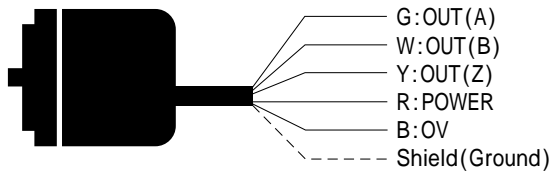
- DC 5~24V power supply
- Metal Slit
- Easy mounting



Model

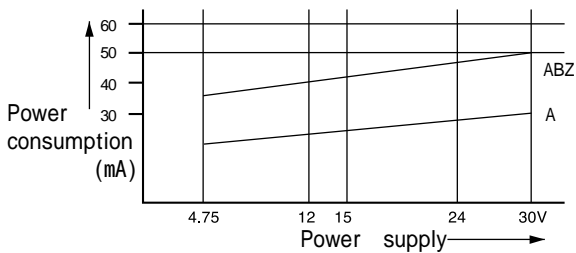
Model	Min. unit	Ratio of gear	Wheel girth	Pulse/Slit
PSC-MA	1m	4:1	250mm	1Pulse
PSC-MB	1cm	4:1	250mm	100Pulse
PSC-MC	1mm	2:1	250mm	500Pulse
PSC-YA	1YARD	4:1	228.6mm(0.25/Yd)	1Pulse
PSC-YB	0.1YARD	4:1	228.6mm(0.25/Yd)	10Pulse
PSC-YC	0.01YARD	4:1	228.6mm(0.25/Yd)	100Pulse

Connection



* Shield wire is not connected to enclosure.

Power consumption



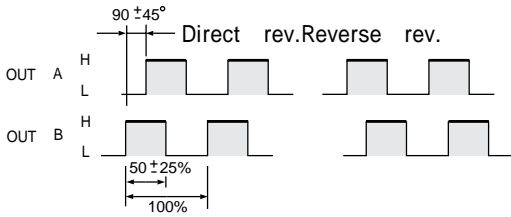
Specification

Classification		PSC	
Power supply	Power voltage	DC 5~24V	
	Ripple	Max. 3% rms	
	Power consumption	Max. 60mA	
Output wave	Signal	Double(Phase difference $90 \pm 45^\circ$)	
	Duty ratio	$50 \pm 25\%$	
	Signal width	50 ~ 150%	
	High/Low time	Max. $3\mu\text{s}$ (50cm cable)	
Output	Type	Transistor output	
	Output Current	Outflow "H"	Max.10mA
		Inflow "L"	Max.30mA
	Output Voltage	"H"	Min. [Power Voltage - 2.5V]
		"L"	Max. 0.4V
Load power voltage	Max. DC 30V		
Shaft allowance load		Radial : 5kg, Thrust : 3kg	
Maximum revolution		5000rpm	
Ambient temperature/humidity		-10 ~ 50 , 35~85% RH	
Insulation resistance		Min. 50MΩ	
Dielectric strength		AC 500V for 1 minute	
Net weight		Approx. 657g	



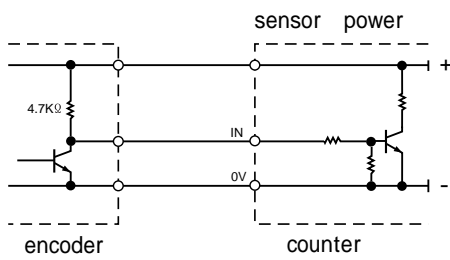
Output wave

PSC - 普 - ABZ

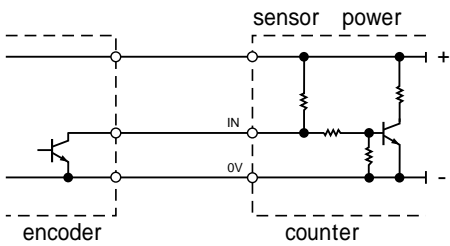


* Direct rev. is clockwise in shaft position.

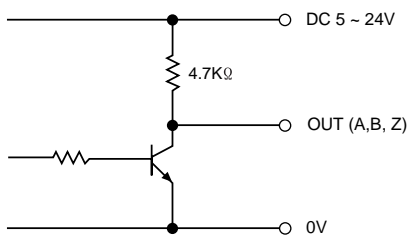
· Voltage output signal to counter input



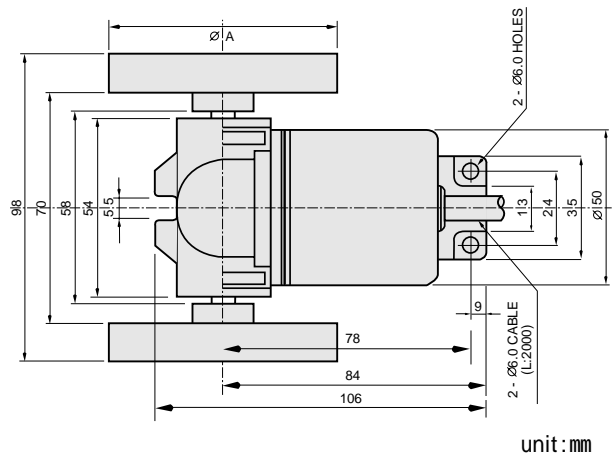
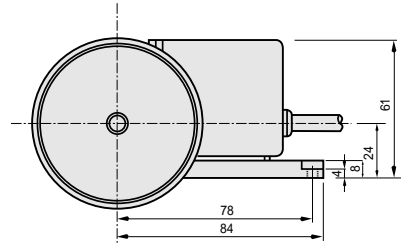
· Open collector output signal to counter input



Output circuit



Dimension



unit: mm